

4 Port Solenoid Valve

VQD1000 Series

Rubber Seal Direct Operated Poppet Type



Unprecedented high speed, with stable response times

ON: 4 ms, OFF: 2 ms, Dispersion accuracy ±1 ms (With light/surge voltage suppressor at a supply pressure of 0.5 MPa)
(Use clean and dry air.)

Compact and lightweight (34 g) with large flow capacity

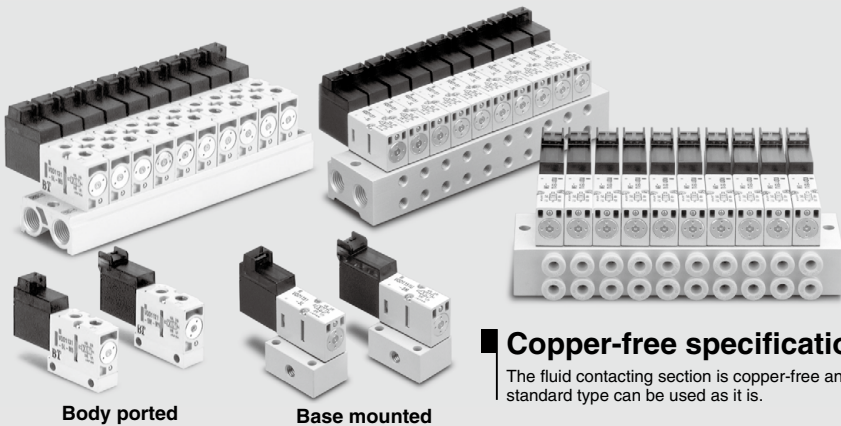
Body width of 10 mm, C: 0.22 dm³/(s-bar) 2 W
C: 0.27 dm³/(s-bar)
3.2 W (U type: Large flow)

Available in vacuum applications (Up to -101.2 kPa)

Can be used in vacuum/release circuits
When used as a 3 port valve, conversion from N.O. to N.C. and vice versa is possible by plugging either port 4(A) or 2(B).

Clean room specifications available as special.

Since the main valve has no sliding seals, non-oil treatment specification at the fluid contacting section is available (Made-to-Order part no. X16). The external non-leak specification is also available (10- series).



Body ported

Base mounted

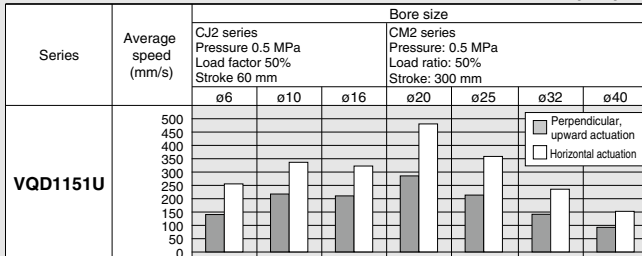
Copper-free specifications

The fluid contacting section is copper-free and the standard type can be used as it is.

Cylinder Speed Chart

Use as a guide for selection.
Please confirm the actual conditions with SMC Sizing Program.

Base Mounted



* It is when the cylinder is extending that is meter-out controlled by speed controller which is directly connected with cylinder, and its needle valve with being fully open.

* The average velocity of the cylinder is what the stroke is divided by the total stroke time.

* Load factor: ((Load weight x 9.8)/Theoretical force) x 100%

Conditions

	Base mounted	CJ2 series	CM2 series
VQD1151U	Tube bore x Length	TU0425 x 1m	
	Speed controller	AS1201F-M5-04	AS2201F-02-04
	Silencer	AN120-M5	

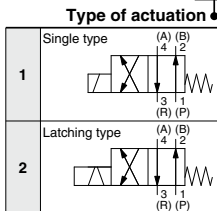
4 Port Solenoid Valve Direct Operated Poppet Type

VQD1000 Series



How to Order Valves

VQD1 1 5 1 - 5 L - - -



Body type

2	Body ported (Single unit)
3	Body ported (Manifold)
5	Base mounted

Note) Latching type: Base mounted type only.

Valve option

Nil	Standard
V	Vacuum
U	For large flow ⁽¹⁾
W	For large flow, vacuum ⁽¹⁾

Note 1) Latching type: U and W only
Note 2) Latching type (-COM): NU and NW

Rated voltage

5	24 VDC
6	12 VDC

Note) Latching type: 24 VDC only

CE/UKCA-compliant

Nil	—
Q	CE/UKCA-compliant

Made to Order

X16 Fluid-contact part: Oil-free

Port size

Body ported	M5	M5 thread (Single unit, Manifold)
Base mounted	Nil	Without sub-plate (Manifold)
	M5	M5 thread (Single unit)

* Fittings with a 10 mm or more width across flats may cause interference.

Electrical entry

L: Plug lead type L plug connector, With lead wire With light/surge voltage suppressor	
LO: Plug lead type L plug connector, Without connector With light/surge voltage suppressor	
M: Plug lead type M plug connector, With lead wire With light/ surge voltage suppressor	
MO: Plug lead type M plug connector, Without connector With light/surge voltage suppressor	

Note) When you expect to energize the unit for extended periods of time, refer to page 1209 for details.

Standard Specifications

Item	Type	Standard single type	Large-flow single type	Large-flow latching type	
Valve specifications	Valve construction	4 port direct operated poppet valve			
	Fluid	Air			
	Maximum operating pressure	0.7 MPa			
	Minimum operating pressure/Vacuum	0 MPa / -101.2 kPa			
	Response time⁽¹⁾	ON: 4ms±1, OFF: 2ms±1		10ms or less	
	Ambient and fluid temperature	-10 to 50°C ⁽²⁾			
	Lubrication	Not required			
	Manual override	Non-locking push type		Locking type	
	Impact/Vibration resistance⁽³⁾	150/30 m/s ²		100/30 m/s ²	
	Mounting position	Unrestricted			
	Enclosure	Dust tight			
	Electricity specifications	Weight	34 g		37 g
Coil rated voltage		DC	24 V, 12 V	24 DC	
Allowable voltage fluctuation		±10% of rated voltage			
Coil insulation type		Class B or equivalent			
Power consumption		DC	2 W		2 W
Electrical entry		L plug connector, M plug connector (With indicator light and surge voltage suppressor)			

Note 1) Based on response time measurement, JIS B8419: 2010. (Coil temperature: 20°C, pressure: 0.5 MPa, at rated voltage, with light and surge suppressor, valve at operation excluding restart period) The period immediately after a restart may be delayed for about 1 msec depending on operating conditions.

Note 2) The operating valve at low temperatures may cause condensate to form, therefore dry air must be used.

Note 3) Impact resistance: No malfunction occurred when it is tested in the axial direction and at the right angles to the main valve and armature in both energized and de-energized states every once for each condition. (Values at the initial period)

Vibration resistance: No malfunction occurred in a one-sweep test between 45 and 2000 Hz. Test was performed at both energized and de-energized states in the axial direction and at the right angles to the main valve and armature. (Values at the initial period)

Note 4) For the start-up time, refer to the energy saving type's electrical power waveform on page 1210 "Wiring Specifications".



L plug connector
Base mounted



L plug connector
Body ported



M plug connector
Base mounted



M plug connector
Body ported

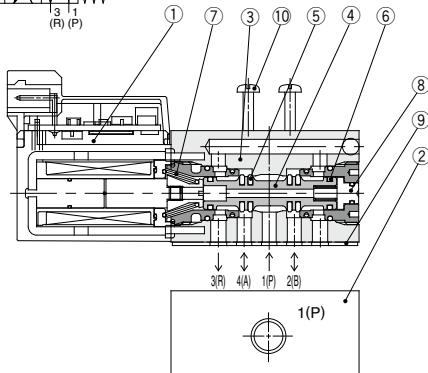
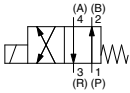
4 Port Solenoid Valve Direct Operated Poppet Type **VQD1000 Series**

Flow Rate Characteristics

Valve model		Port size	Flow rate characteristics					
			1 → 4/2 (P → A/B)			4/2 → 5/3 (A/B → EA/EB)		
			C [dm ³ /(s·bar)]	b	Cv	C [dm ³ /(s·bar)]	b	Cv
Body ported	VQD1121-□ _h -M5	M5 x 0.8	0.22	0.16	0.05	0.19	0.31	0.05
	VQD1121 ^U _W -□ _L -M5		0.27	0.24	0.07	0.28	0.28	0.07
Base mounted (With sub-plate)	VQD1151-□ _h -M5		0.22	0.10	0.05	0.22	0.31	0.06
	VQD1151 ^U _W -□ _L -M5		0.27	0.25	0.07	0.27	0.28	0.07

Construction

Symbol



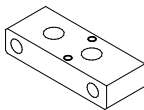
Component Parts (Single Type)

No	Description	Material	Note
1	Solenoid coil assembly	—	
2	Sub-plate	Aluminum	VQD1000-S-M5 (Base mounted only)
3	Body	ZDC	
4	Spool valve	Aluminum	
5	Poppet	HNBR	
6	Guide ring	Resin	
7	Return spring	Stainless steel	
8	Manual override	Aluminum	
9	Gasket	HNBR	
10	Round head combination screw	Steel	

Note) Body cannot be disassembled.

Valve Single Unit Option

Piping plate assembly VQD1000-20A



Manifold type (VQD1131) can be changed to single unit type (VQD1121) by mounting plate assembly.

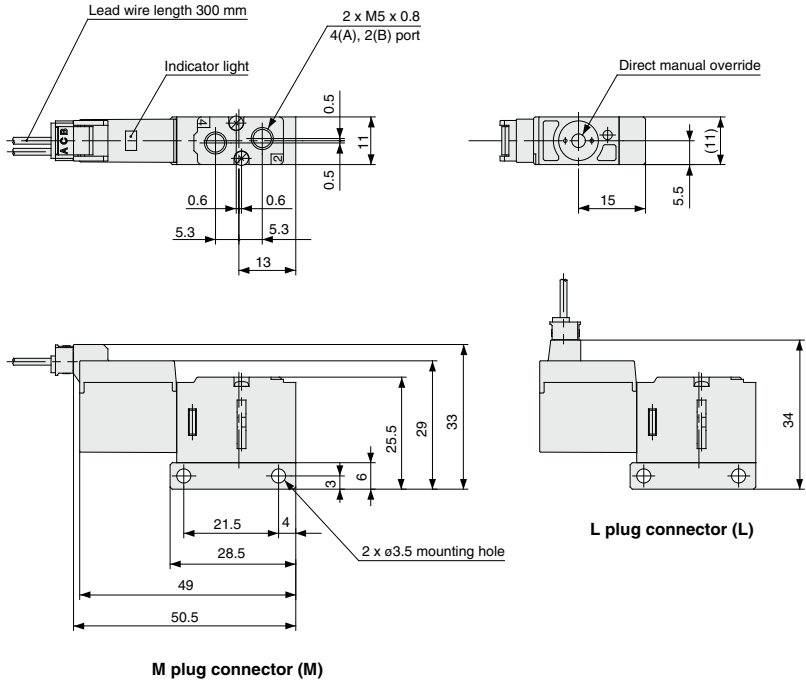
Note) Plate should be mounted with manifold mounting screws (M1.7 x 20).
Proper tightening torque of thread: 0.18 to 0.25 N·m

VQD1000 Series

Dimensions/Body Ported

L plug connector: VQD1121□-□L-M5

M plug connector: VQD1121□-□M-M5

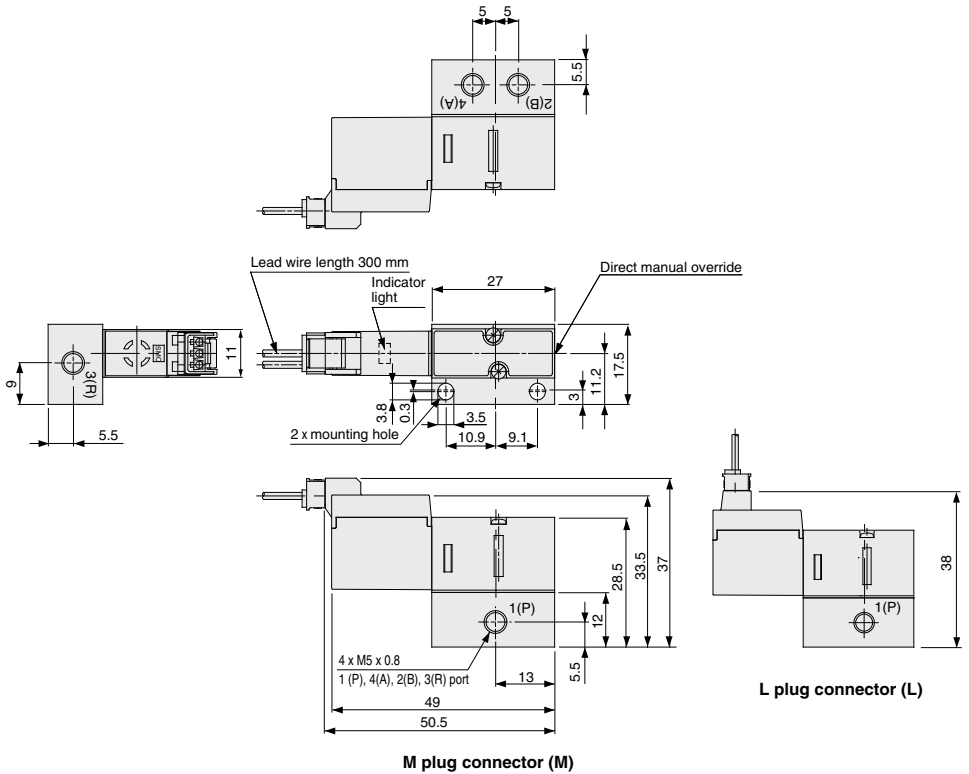


4 Port Solenoid Valve
Direct Operated Poppet Type **VQD1000 Series**

Dimensions/Base Mounted

L plug connector: VQD1151□-□L-M5

M plug connector: VQD1151□-□M-M5

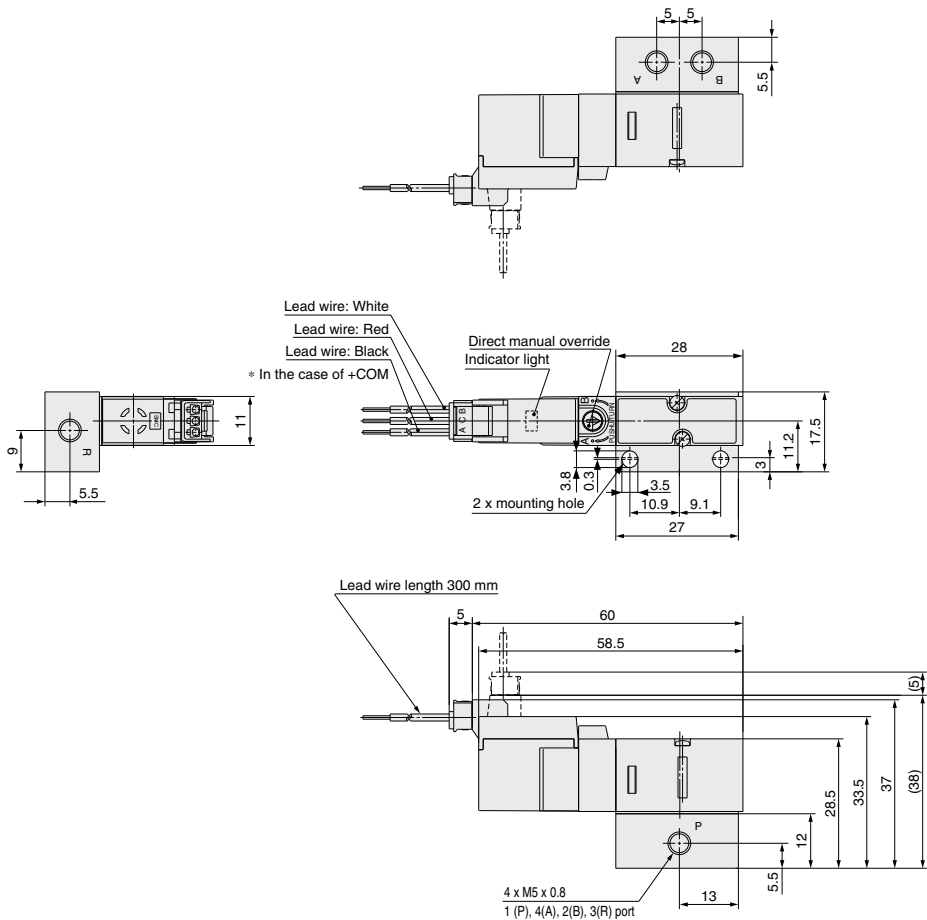


VQD1000 Series

Dimensions/Base Mounted

L plug connector: VQD1251□-□L-M5

M plug connector: VQD1251□-□M-M5



• The dashed line indicates L plug connector.

4 Port Solenoid Valve Direct Operated Poppet Type **VQD1000 Series**



How to Order Manifold

How to Order Valves



Plug lead unit manifold

VV4QD1 **5** - [] - [] - []

Manifold

2	Body ported
5	Base mounted

CE/UKCA-compliant

Nil	—
Q	CE/UKCA-compliant

Valve station

02	2 stations
⋮	⋮
20	20 stations (Max.)

Port size (Cylinder port)

Nil	Body ported	M5 thread
M5	Base mounted	M5 thread
C4		One-touch fitting for ø4

1(P), 3(R) port: Rc 1/8

VQD1 **1** **5** **1** [] - **5** **L** - [] - []

Type of actuation

1	Single type
2	Latching type

Body type

3	Body ported
5	Base mounted

Note) Latching type: Base-mounted type only.

Valve option

Nil	Standard
V	Vacuum
U ^{Note)}	For large flow
W ^{Note)}	For large flow, vacuum

Note 1) Latching type: U and W only
Note 2) Latching type (-COM): NU and NW

Rated voltage

5	24 VDC
6	12 VDC

Note) Latching type: 24 VDC only

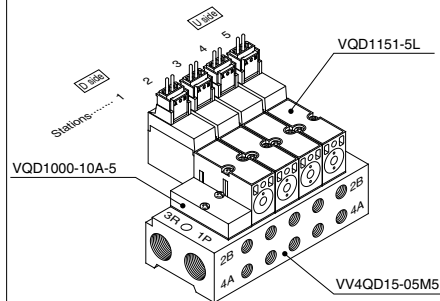
How to Order Manifold Assembly

Specify the part numbers for valves and options together beneath the manifold base part number.

<Example>
 Plug lead unit manifold
 VV4QD15-05M5.....1 set — Manifold base part no.
 *VVQD1000-10A-5.....1 set — Blanking plate part no. (1st station)
 *VQD1151-5L.....4 sets — Valve part no. (2 to 5th station)

Prefix the asterisk to the part nos. of the solenoid valve, etc.

Enter in order starting from the first station on the D side.←



Electrical entry

L: Plug lead type L plug connector, With lead wire With light/surge voltage suppressor	
LO: Plug lead type L plug connector, Without connector With light/surge voltage suppressor	
M: Plug lead type M plug connector, With lead wire With light/surge voltage suppressor	
MO: Plug lead type M plug connector, Without connector With light/surge voltage suppressor	

Port size (Body ported only)

Nil	Base mounted	—
M5	Body ported	M5 thread

CE/UKCA-compliant

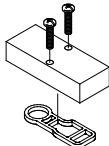
Nil	—
Q	CE/UKCA-compliant

VQD1000 Series

Manifold Options

Blanking plate assembly/Body ported

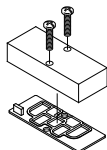
VVQD1000-10A-2



Blanking plate assembly includes 2 screws and gasket

Blanking plate assembly/Base mounted

VVQD1000-10A-5

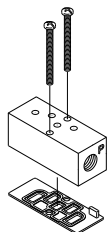


Blanking plate assembly includes 2 screws and gasket

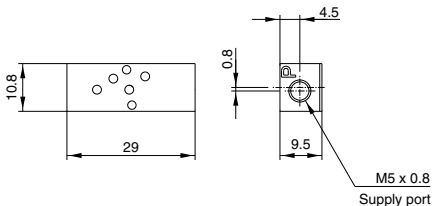
Individual SUP spacer/Base mounted

VVQD1000-P-M5-5

Mount the individual SUP spacer on the manifold base, and thus making it possible to have supply port individually for each valve.



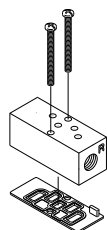
Individual SUP spacer with screw (2 pcs.) and gasket



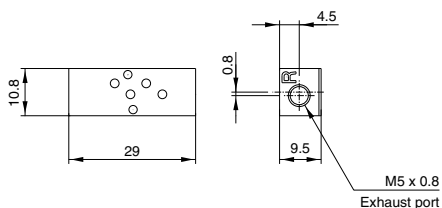
Individual EXH spacer/Base mounted

VVQD1000-R-M5-5

Mount the individual EXH spacer on the manifold base, and thus making it possible to have exhaust port individually for each valve. (Common EXH type)



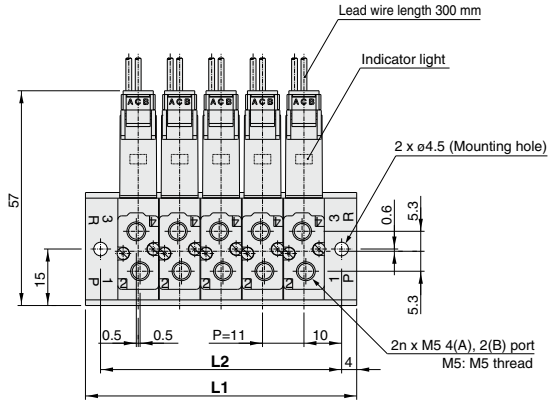
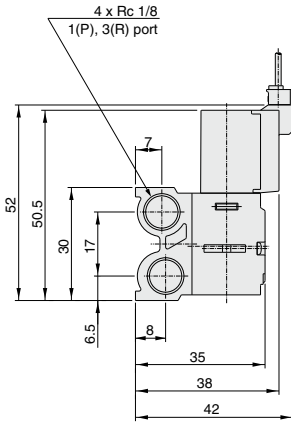
Individual EXH spacer with screw (2 pcs.) and gasket



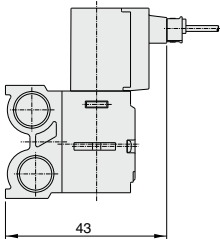
4 Port Solenoid Valve Direct Operated Poppet Type **VQD1000 Series**

Dimensions/Body Ported

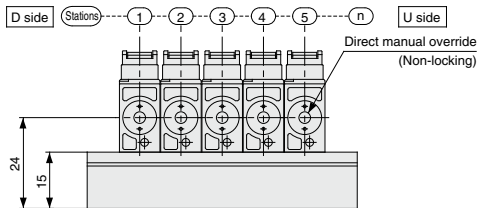
Plug lead unit manifold(VV4QD12-□)



M plug connector (M)



L plug connector (L)



Dimensions

L	n	n: Stations																		
		2	3	4	5	6	7	8	9	10	11	12	13	14	15	16	17	18	19	20
L1		39	50	61	72	83	94	105	116	127	138	149	160	171	182	193	204	215	226	237
L2		31	42	53	64	75	86	97	108	119	130	141	152	163	174	185	196	207	218	229



VQD1000 Series Specific Product Precautions 1

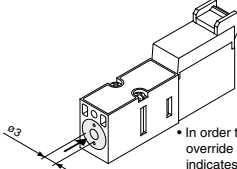
Be sure to read this before handling the products. For safety instructions and 3/4-5-port solenoid valve precautions, refer to the “Handling Precautions for SMC Products” and the “Operation Manual” on the SMC website: <https://www.smcworld.com>

Manual Override Operation

Warning

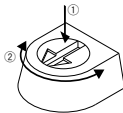
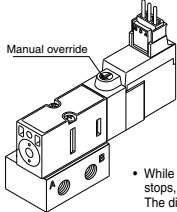
Connected actuator is started by manual operation. Use the manual override after confirming that there is no danger.

■ Single type: Non-locking push type (Tool required)



• In order to turn it ON, push down the manual override button in the direction the arrow (→) indicates until it stops (approx. 0.5 mm), and release it to turn it OFF.

■ Latching type: Locking type (Tool required)



- While pushing down the manual override until it stops, turn it by 90° and stop the arrow at A or B. The direction can be changed as desired. (A: Flow path: P → A, B: Flow path: P → B)
- The manual override is in the locked state when it is released.
- The locking will be released and the manual override will return, when it is returned to the free position. (Note) Be sure to release the locking before starting the normal operation.



Manual override-free position

Continuous Energization

Warning

• Coil temperature may get high due to ambient temperature or energizing duration. Do not touch the valve by hand directly. When there is such a dangerous case to be touched by hands directly, install a protective cover.

Continuous Energization

Warning

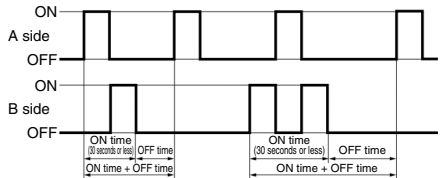
• If a valve will be continuously energized for an extended period of time, the temperature of the valve will increase due to the heat generated by the coil assembly. This will likely adversely affect the performance of the valve and any nearby peripheral equipment.

• When the single type will be continuously energized:

If the valve will be energized for over 30 minutes at a time or if it will be energized for longer than it is de-energized each day, we recommend using a VK series or VT series continuous duty type valve.

• When the latching type will be continuously energized:

Only energize the valve for 30 seconds or less at a time, and then be sure to de-energize the valve (on both the A side and the B side) for longer than it was energized before operating again. The duty ratio should be 50% or less.



• Maximum ON time is 30 seconds.

• Duty ratio ≤ 50% (Duty ratio = $\frac{\text{ON time}}{\text{ON time} + \text{OFF time}}$)

Example: When energization lasts for 30 seconds, it should be followed by 30 or more seconds of deenergization. Because the latching type has only one solenoid, both the A side and B side should be off for 30 seconds or more.

Mounting of Valves

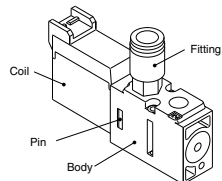
Caution

• After confirming the gasket is correctly placed under the valve, securely tighten the bolts with the proper torque shown in the table below.

Proper tightening torque (N·m)

0.18 to 0.25

• When piping and mounting valves, clamp the body part in place to avoid applying force to the coil. If you apply force over 120 N to coil, connection pins deform, which may cause malfunction. (Latching: 50 N or more)





VQD1000 Series Specific Product Precautions 2

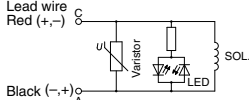
Be sure to read this before handling the products. For safety instructions and 3/4/5-port solenoid valve precautions, refer to the "Handling Precautions for SMC Products" and the "Operation Manual" on the SMC website: <https://www.smcworld.com>

Wiring Specifications

⚠ Caution

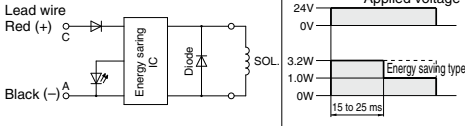
The standard product (2 W type) does not have polarity. For the large flow type (3.2 W energy-saving type), if the polarity connection is wrong, the valve will not operate.

• Single type (Standard: 2 W)

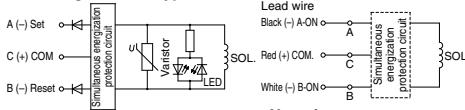


Note) Coil surge voltage generated when OFF is about 60 V.

• Single type (Large flow: 3.2 W)



• Latching solenoid type



• How to order connector assembly

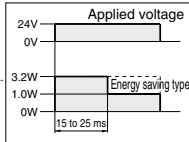
- Single
AXT661-14A □
 - Latching, Positive common
AXT661-13A □
 - Latching, Negative common
AXT661-13AN □
- Connector and socket (3 pcs.) only
AXT661-12A □

• Plug connector lead wire length

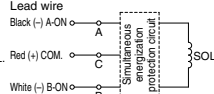
Lead wire length of plug connector valve with lead wire is 300 mm. When ordering a valve with a lead wire of 600 mm or longer, be sure to indicate the model number of the valve without connector and connector assembly.

3.2 W type (Energy saving type) reduces current consumption at holding which reduces the overall power consumption using the circuit shown in the left figure. Refer to the energy saving type's electrical power waveform below.

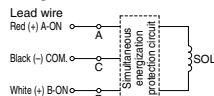
<Energy saving type's electrical power waveform> (Rated voltage: 24 VDC)



• Positive common



• Negative common



• Lead wire length

Nil	300 mm
6	600 mm
10	1000 mm
20	2000 mm
30	3000 mm

Latching

⚠ Caution

Latching Type

The latching is equipped with a self-holding mechanism, which permits a movable iron core in the solenoid to hold the set (A-ON) and reset (B-ON) positions during momentary energization (50 ms or longer). Therefore, there is no need to energize continuously.

<Special Cautions for Latching>

1. Use in a circuit that does not have simultaneous energization of A-ON and B-ON signals.
2. The minimum energization time required for self-holding is 50 ms.
3. Although there is no problem for normal operations and environments, please consult SMC when operating in an environment with vibration (10G or more) or strong magnetic fields.
4. When there is the magnetic body at the valve side, it may cause malfunction. Allow a space over 10 mm between the valve and magnetic body.
5. Even though this valve is held on to B-ON position (passage: P → B), it may switch to the set position during transportation or due to impact when mounting valves, etc. Therefore, check the initial position by means of power supply or manual override prior to use.

Energization		Passage	Light color
A-ON (Set)	A (-) Black C (+) Red	P → A (B → B)	Red
B-ON (Reset)	B (-) White C (+) Red	P → B (A → R)	Green

Note) For positive common

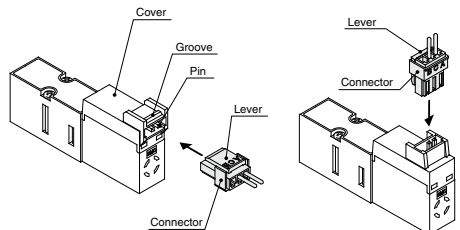
How to Use Plug Connector

⚠ Caution

Attaching and detaching connectors

- To attach a connector, hold the lever and connector unit between your fingers and insert straight onto the pins of the solenoid valve so that the lever's pawl is pushed into the groove and locks.
- To detach a connector, remove the pawl from the groove by pushing the lever downward with your thumb, and pull the connector straight out.

Note) Gently pull the lead wire, otherwise it may cause contact failure or disconnection.





VQD1000 Series

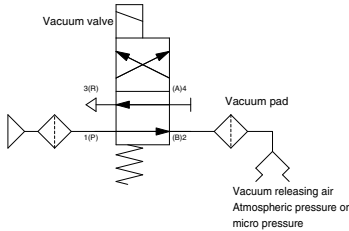
Specific Product Precautions 3

Be sure to read this before handling the products. For safety instructions and 3/4/5-port solenoid valve precautions, refer to the “Handling Precautions for SMC Products” and the “Operation Manual” on the SMC website: <https://www.smcworld.com>

How to Use the Valve for Vacuum Applications (When used as a 3 port valve)

Caution

Application example of “VQD1 $\frac{2}{2}$ $\frac{3}{5}$ 1 $\frac{2}{5}$ W”
(Symbols used are typical examples.)



- Use a VQD1 $\frac{2}{2}$ $\frac{3}{5}$ 1 $\frac{2}{5}$ W valve for vacuum applications.
Connect the vacuum source to the 3(R) port.
 - * Positive pressure cannot be supplied from the 3(R) port.
- When used as a 3 port valve, conversion from N.O. to N.C. and vice versa is possible by plugging either port 4(A) or 2(B).
 - * Cannot be used as 2 port valve.

How to Calculate the Flow Rate

For obtaining the flow rate, refer to the **Web Catalog**.

Lubrication

Warning

Do not lubricate the product.